



1900 Wellworth Ave. • Jackson, MI 49203
517-787-2100

Submittal Data

CMA1430SG-1

Project Name:	
Location:	
Engineer:	
Submitted to:	
Submitted by:	
Reference:	

Approval:	
Date:	
Construction:	
Unit #:	
Drawing #:	

Performance Data

Power supply	Ph-V-Hz	
Cooling		
Capacity	Btu/h	30,000
Input	W	2515
Rated current	A	11.5
EER	Btu/w	12.2
SEER	Btu/w	14.5
MINIMUM CIRCUIT AMPACITY	A	14
MAX.FUSE	A	20

Compressor Electrical

Model	ASH239DG-C8DU
Type	ROTARY
Brand	HIGHLY
Capacity	Btu/h 24323
Input	W 2310
Rated current(RLA)	A 9.9
Coil Treatment	/
Thermal protector position	Internal
Connection wiring	18ga 2 Conductor

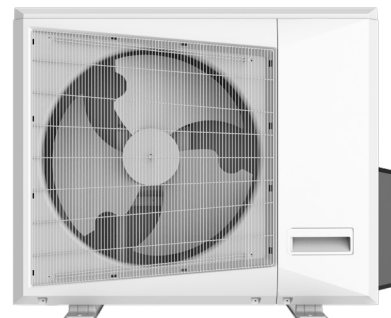
Air Flow & Noise Level

Outdoor air flow	CFM	2680
Outdoor noise level	dB(A)	58

Thermostat type Standard 24v Control

Fan Motor

Model	YDK-105-6P2-1
Brand	Xinjun
Input	W 197
RLA	A 0.86
LRA	A 0.99
Winding Resistance	Ω 56.9
Capacitor	uF 5
Speed	r/min 880



Ambient Temperature

Outdoor(cooling) Deg. F 65-109

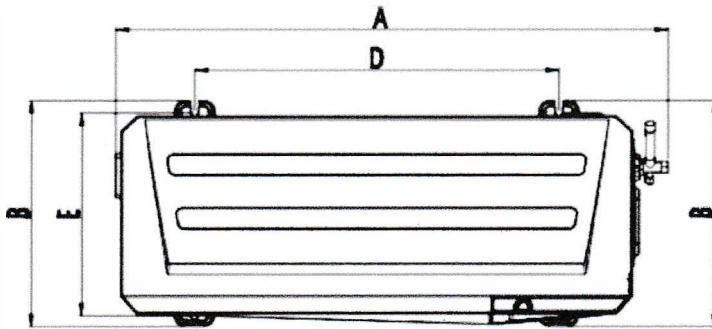
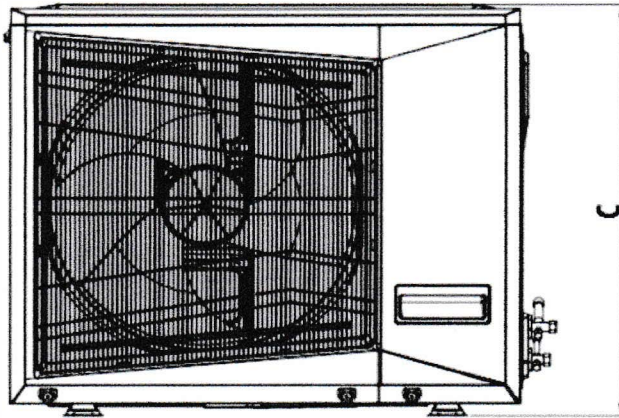
System Operational Data

Design pressure	PSIG	Hi (540) Lo(300)
Refrigerant oil/oil charge	ml	570
Refrigerant type/charge	oz	116.4
Refrigerant precharge	g	3300
Additional charge per ft.	oz	0.32
Liquid side/ Gas side	in	3/8" / 3/4"
Max. length	ft	82
Max. height difference	ft	33

Dimensional Data

Dimension(W*D*H)	inch	40.0x17.5x31.9
Packing (W*D*H)	inch	42.3x19.5x34.5
Net/Gross weight	lbs.	141.1/152.1

CMA14--SG



Model	A	B	C	D	E
30K	40.0	17.5	31.9	26.4	15.2

Accessories

83907	Surge Protection
83916	Disconnect with internal surge
83335	60 amp Unfused Disconnect
93642	Bracket
93540	Condenser Pad

**Use of piston-style metering device is typical.
Where TXV's are used, a 15% bleed-type is required.
Use of Non-bleed TXV's will void warranty.**

Bleed-Style TXV's for use with CMA14-SERIES and Comfort-Aire Coils/Air Handlers:

- **67304001** TXV for use with **CMA14 1.0T – 3.0T**
 - (C,M)CG*P Coils
 - HMG/HCG Air Handlers
- **4203** TXV for use with **CMA14 1.5T – 3.0T**
 - (C,M)CG*M Coils
 - HWCG Hydronic Air Handlers